

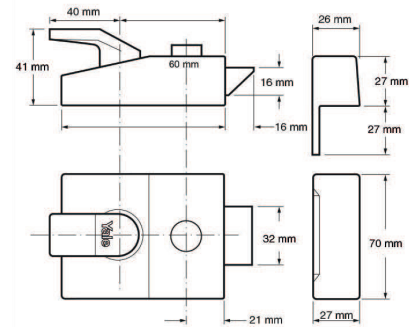
Nightlatch 89 Deadlocking standard nightlatch







Specifications:

- Backset 60mm
- Inside handle can be deadlocked by reverse turn of key in outside cylinder after losing the door
- Snib function enables the latch to be held back
- Deadlocked by the snib button internally, making the lock inoperable by key or handle
- High security anti-bump cylinder

Features:

- Suitable for both left and right handed,
- For inward opening doors up to 57mm thick.



					
P-89-BLX-PB-60	Security lock	1	Blister	Polished brass	Polished Brass
P-89-DMG-PB-60	Security lock	1	Blister	Grey	Satin Chrome
P-89-DMG-SC-60	Security lock	1	Blister	Grey	Satin Chrome

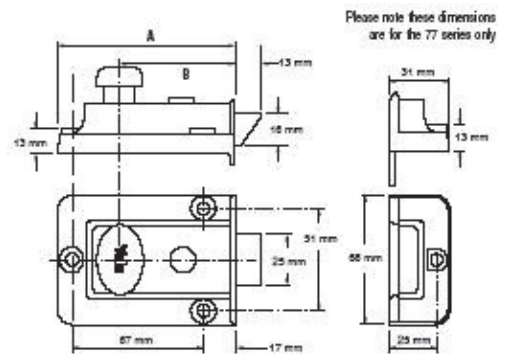
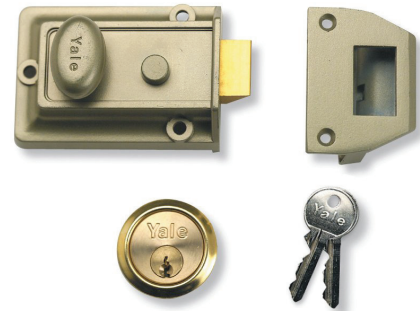
77T Traditional nightlatch

Specifications:

- The original Yale lock
- 60mm backset
- Snib function enable the latch to be held back
- Latch can be deadlocked by the snib button internally

Features:

- Suitable for both left and right handed,
- For inward opening doors up to 57mm thick.



					
P-77-CH-CH-60	Nightlatch	1	Blister	Chrome	Chrome
P-77-ENB-PB-60	Nightlatch	1	Blister	Electro nickel brass	Polished Brass
P-77-ENB-SC-60	Nightlatch	1	Blister	Electro nickel brass	Satin Chrome
P-77-BLX-PB-60	Nightlatch	1	Blister	Polished brass	Polished Brass



Nightlatch

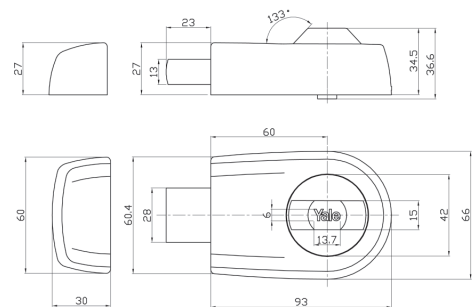
Nightlatch Y2D Rim dead bolt

Specifications:


- Lock case body of die cast zinc alloy
- Backset 60mm
- Operated by turn knob from inside and by key from outside
- Brass cylinder and flat dimple keys (4pcs)

Features:

- Suitable for left and right hand opening doors
- Suitable for door thickness: 35mm - 70mm



Buy and register software outside imagesDip.com

				
Y2DAB	Rim dead bolt	1	Blister	Antique brass
Y2DDL	Rim dead bolt	1	Blister	Polished chrome
Y2DGN	Rim dead bolt	1	Blister	Brown
Y2DGS	Rim dead bolt	1	Blister	Matt black
Y2DPB	Rim dead bolt	1	Blister	Polished brass
Y2DSN	Rim dead bolt	1	Blister	Satin nickel
Y2DWH	Rim dead bolt	1	Blister	White

Nightlatch

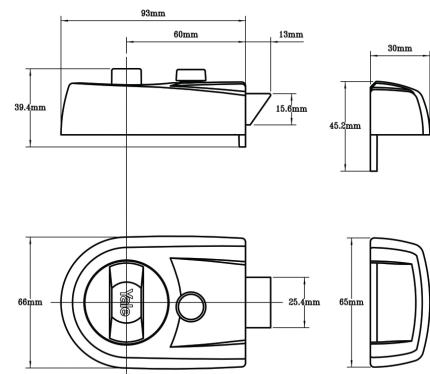
Y3 Contemporary nightlatch







Specifications:

- 60mm backset
- Snib function enables the latch to be held back
- Latch can be deadlocked by the snib button internally

Features:

- Contemporary design
- Retro-fit replacement for 77T Traditional Nightlatch - No additional chiselling required
- Suitable for both left and right handed
- For inward opening doors up to 57mm thick.



					
P-Y3-BLX-PB-60	Y3 Nightlatch	1	Blister	Polished brass	Polished Brass
P-Y3-CH-CH-60	Y3 Nightlatch	1	Blister	Chrome	Chrome