

Lever Rim Deadlock

1116

Application:

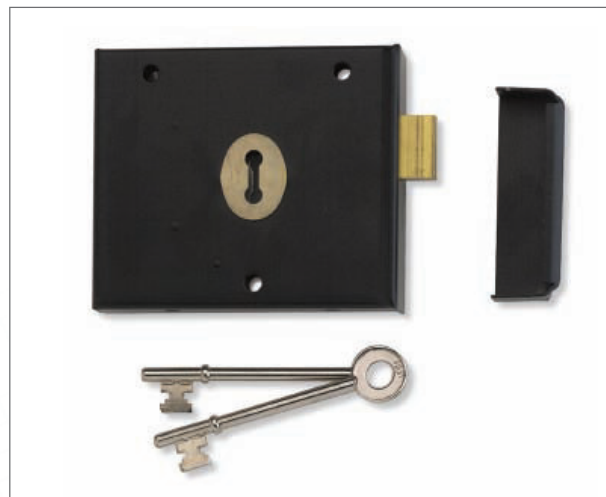
- For timber doors up to 50mm thick, hinged on the left or right and opening inwards only
- Also suitable for steel and composite doors - special fixings required

Operation:

- The bolt is locked or unlocked by key from either side

Specification:

Reference	1116
Backset	51mm
Case & Keep	Steel, black enamel finish
Deadbolt	Brass
Locking Mechanism	Nib ward and tumbler
Keying	Available keyed alike. May be keyed alike with 1445 and 1448 locks. Not available master keyed. 2 steel nickel plated keys
Key Blank Number	KB150 - spare cut keys RF series (numbers range from R4F to R13F)



Finishes:

- BJ - Black Japanned finish

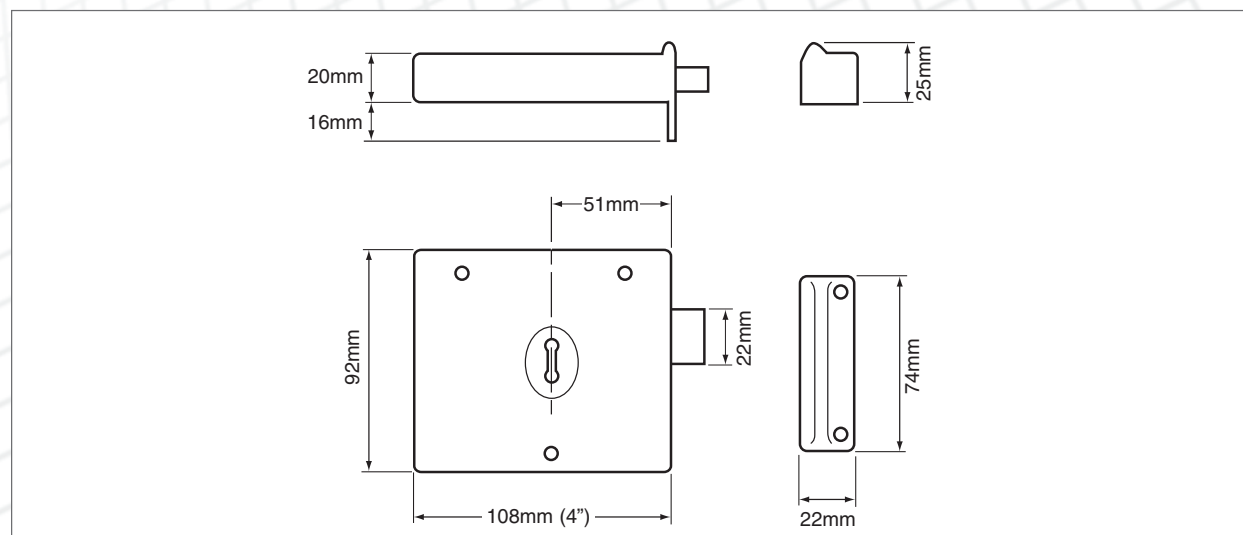
Standards:



Ordering Code Example:

J 1116 - BJ - 4.00

(Boxed - Product Code - Finish - Case Size)



Lever Rim Deadlock

1139

Application:

- For timber doors up to 50mm thick, hinged on the left or right and opening inwards only
- Hand must be stated on order
- Also suitable for steel and composite doors - special fixings required

Operation:

- The bolt is locked or unlocked by key from either side

Specification:

Reference	1139
Backset	51mm (4") or 76mm (6")
Case & Keep	Steel, black enamel finish
Deadbolt	Brass
Locking Mechanism	3 lever
Keying	Available keyed alike, may be keyed alike with 1439 lock. Available master keyed in 4" version only. 2 steel nickel plated keys
Key Blank Number	KB144 - spare cut keys RC series (numbers range from R1C to R50C)



Finishes:

- BJ - Black Japanned finish

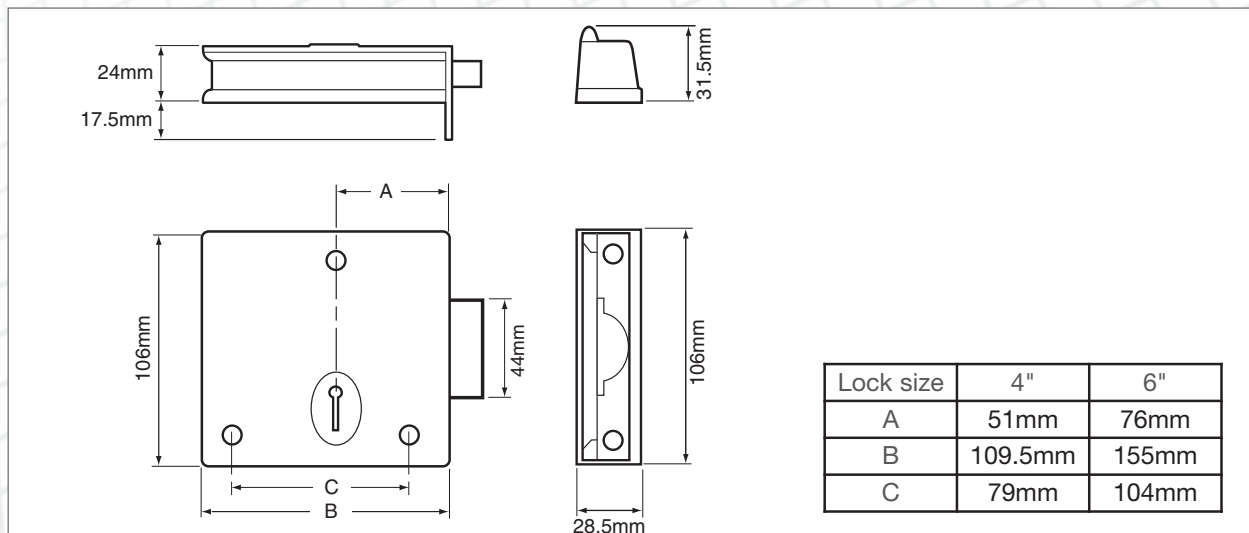
Standards:



Ordering Code Example:

J 1139 - BJ - 4.0L

(Boxed - Product Code - Finish - Case Size - Hand)



Lever Rim Latch

1209

Application:

- For timber doors hinged on the left or right and opening inwards only
- Also suitable for steel and composite doors - special fixings required

Operation:

- The bolt is withdrawn by knob from either side
- Slide bolt operated from inside only

Specification:

Reference	1209
Backset	76mm
Case & Keep	Steel, black enamel finish
Latch Bolt	Brass reversible
Slide Bolt	Zinc, brass plated
Locking Mechanism	Latch and snib
Keying	n/a
Key Blank Number	n/a



Finishes:

- BJ - Black Japanned finish

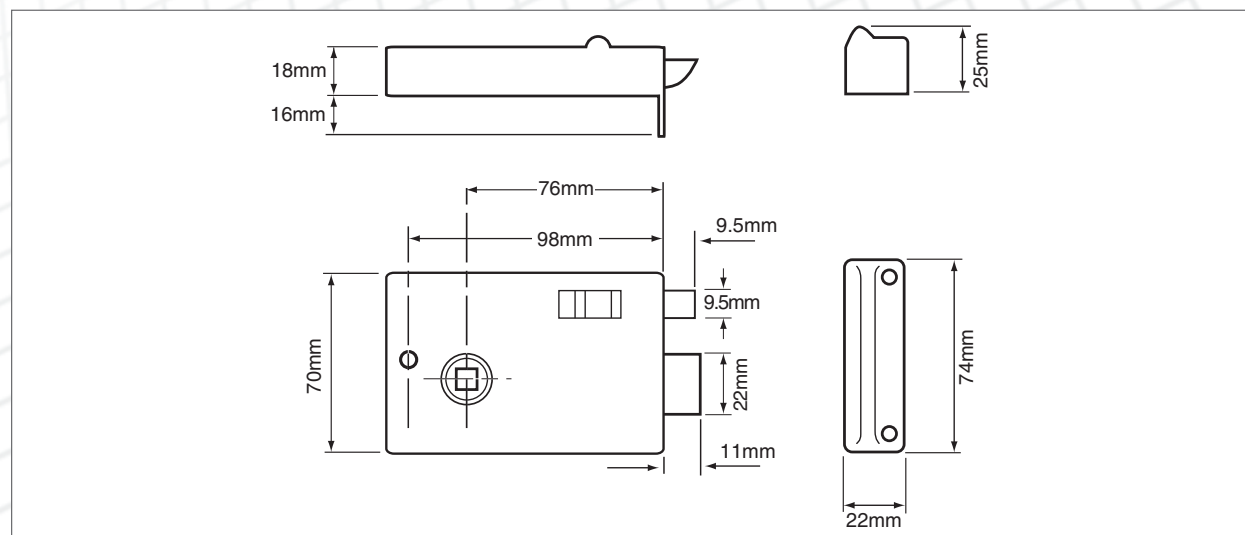
Standards:



Ordering Code Example:

J 1209 - BJ

(Boxed - Product Code - Finish)



Lever Rim Lock

1439

Application:

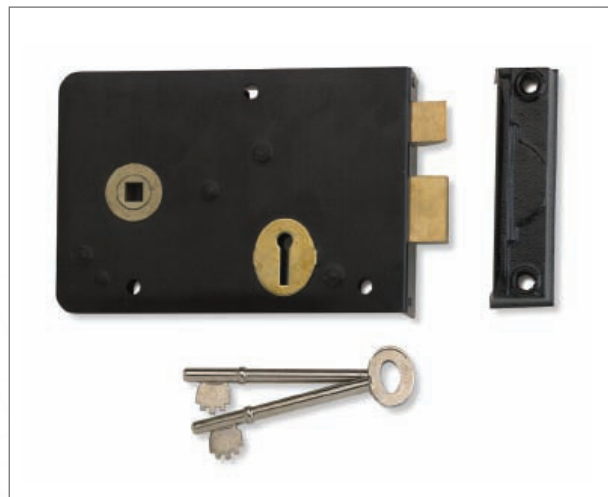
- For timber doors up to 50mm thick, opening inwards only
- Hand must be stated on order
- Also suitable for steel and composite doors - special fixings required

Operation:

- The deadbolt is locked or unlocked by key from either side
- The latch bolt is withdrawn by knob from either side

Specification:

Reference	1439
Backset	53mm
Case & Keep	Steel, black enamel finish
Deadbolt	Brass
Latch Bolt	Brass, reversible
Locking Mechanism	3 lever
Keying	Not available master keyed. May be keyed alike with 1139 lock. 2 steel nickel plated keys
Key Blank Number	KB144 - spare cut keys RC series (numbers range from R1C to R50C)



Finishes:

- BJ - Black Japanned finish

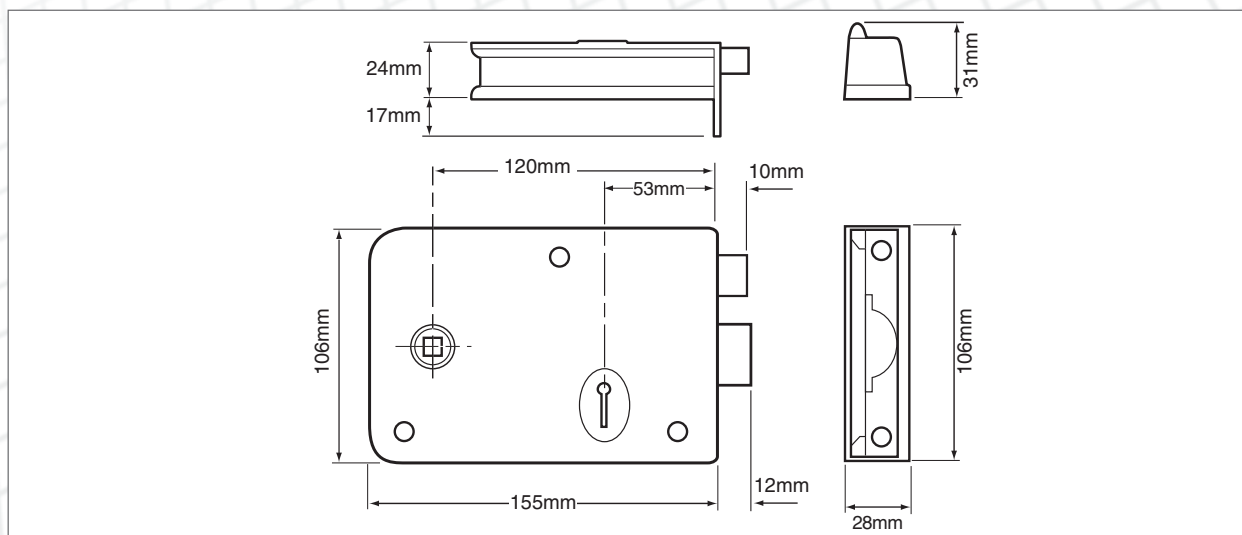
Standards:



Ordering Code Example:

J 1439 - BJ - LH

(Boxed - Product Code - Finish - Hand)



Lever Rim Lock

1445

Application:

- For timber doors up to 50mm thick, hinged on the left or right opening inwards only
- Also suitable for steel and composite doors - special fixings required

Operation:

- The deadbolt is locked or unlocked by key from either side
- The latch bolt is withdrawn by knob from either side

Specification:

Reference	1445
Backset	51mm
Case & Keep	Steel, black enamel finish
Deadbolt	Brass
Latch Bolt	Brass, reversible
Locking Mechanism	Nib ward and tumbler
Keying	Not available master keyed. May be keyed alike with 1116 and 1448 locks. 2 steel nickel plated keys
Key Blank Number	KB150 - spare cut keys RF series (numbers range from R4F to R13F)

Packaging:

- Available Boxed or Visi Packed



Finishes:

- BJ - Black Japanned finish and PL - Polished Lacquered Brass (Boxed)
- CG - Champagne Gold and PL - Polished Lacquered Brass (Visi Packed)

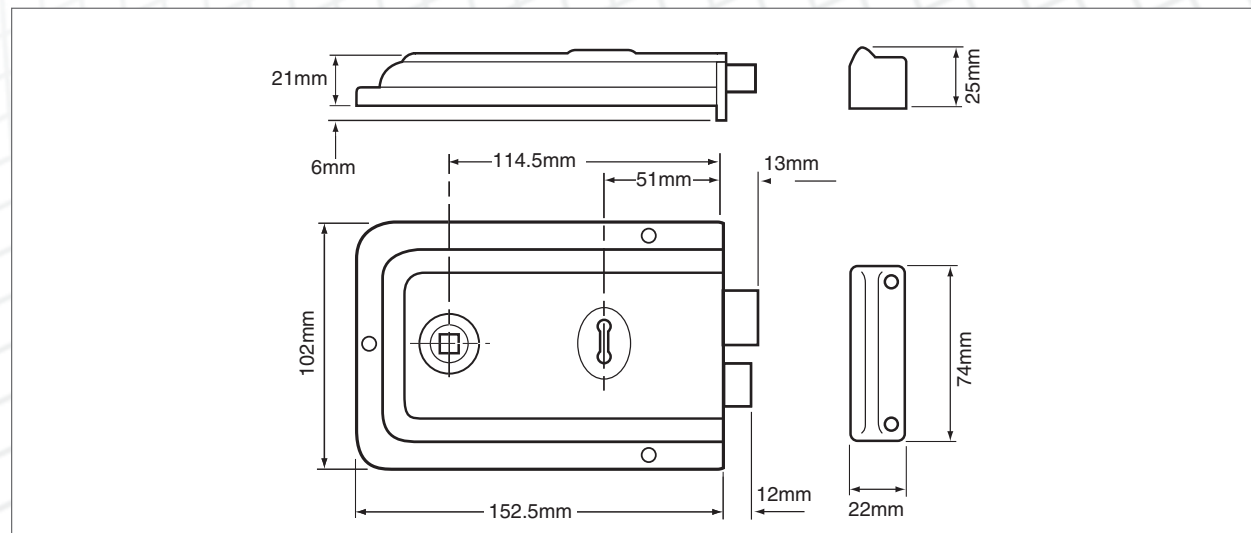
Standards:



Ordering Code Example:

J 1445 - BJ
(Boxed - Product Code - Finish)

Y 1445 - CG
(Visi Packed - Product Code - Finish)



Lever Rim Lock

1448

Application:

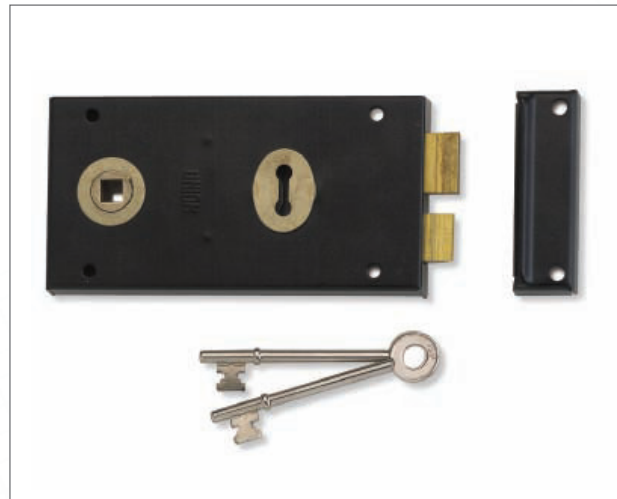
- For timber doors up to 50mm thick, hinged on the left or right opening inwards only
- Also suitable for steel and composite doors - special fixings required

Operation:

- The deadbolt is locked or unlocked by key from either side
- The latch bolt is withdrawn by knob from either side

Specification:

Reference	1448
Backset	51mm
Case & Keep	Steel, black enamel finish
Deadbolt	Brass
Latch Bolt	Brass
Locking Mechanism	Nib ward and tumbler
Keying	Not available master keyed. May be keyed alike with 1116 and 1445 locks. 2 steel nickel plated keys
Key Blank Number	KB150 - spare cut keys RF series (numbers range from R4F to R13F)



Finishes:

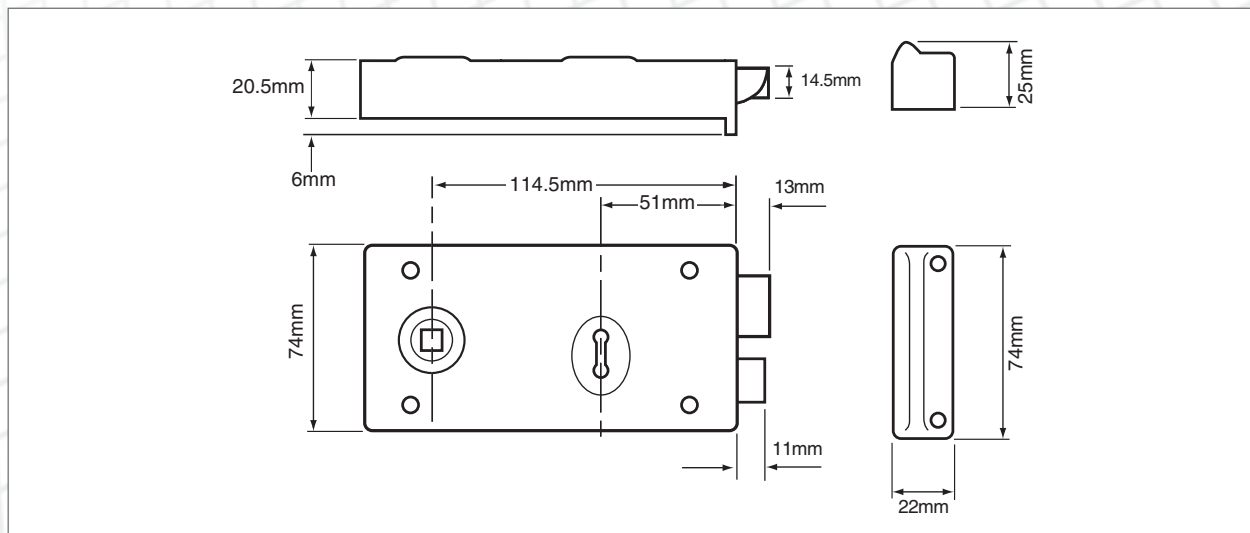
- BJ - Black Japanned finish

Standards:



Ordering Code Example:

J 1448 - BJ
(Boxed - Product Code - Finish)



Lever Rim Lock

1465

Application:

- For timber doors up to 50mm thick, hinged on the left or right opening inwards only
- Hand must be stated on order
- Also suitable for steel and composite doors - special fixings required

Operation:

- The deadbolt is locked or unlocked by key from either side
- The latch bolt is withdrawn by knob from either side

Specification:

Reference	1465
Backset	51mm
Case & Keep	Steel, black enamel finish
Deadbolt	Brass
Latch Bolt	Brass
Locking Mechanism	3 lever
Keying	Available keyed alike and master keyed. 2 steel nickel plated keys KB147 - 50 standard differs (numbers from R11A to R60A). 400 maximum differs (numbers from R101B to R500B)
Key Blank Number	



Finishes:

- BJ - Black Japanned finish

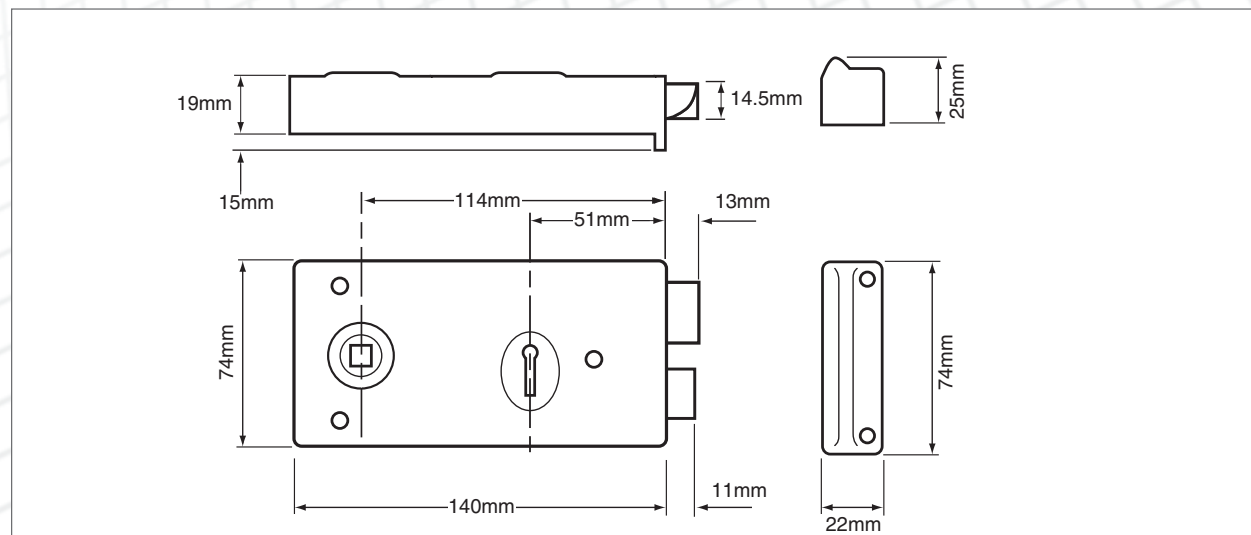
Standards:



Ordering Code Example:

J 1465 - BJ - LH

(Boxed - Product Code - Finish - Hand)



Wellington Rim Deadlock

5D

Application:

- For timber doors

Operation:

- Key operation from the outside only

Specification:

Reference	5D
Backset	45mm
Case	Die cast mazak
Bolt	Steel
Locking Mechanism	5 lever
Keying	Not available master keyed Available keyed alike 2 nickel plated steel keys
Key Blank Number	n/a



Finishes:

- GRY - Grey

Standards:



Ordering Code Example:

J 5D - GRY

(Boxed - Product Code - Finish)

